

FreeSCAN Remote Control Guide

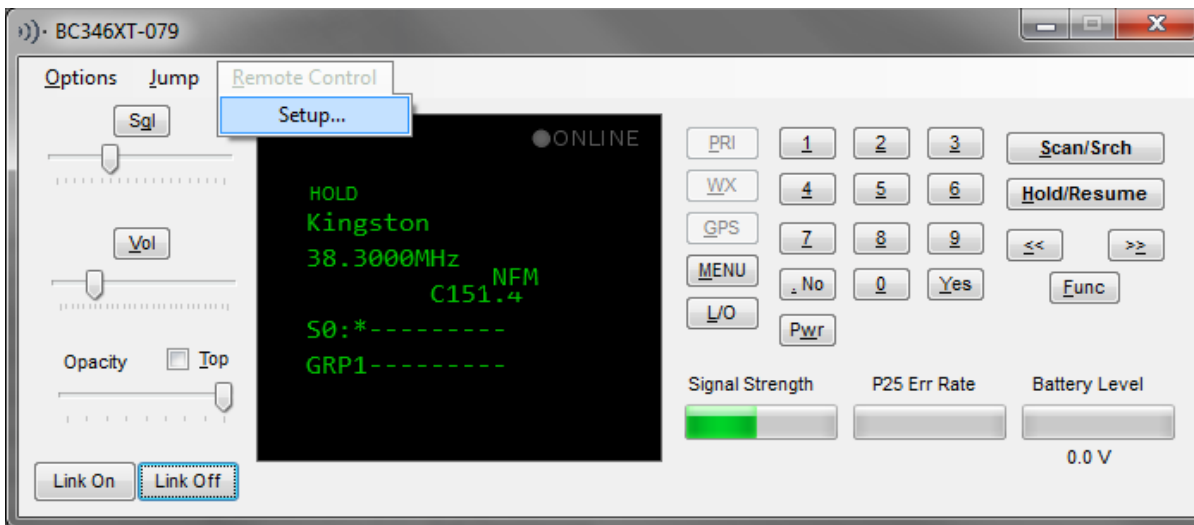
This guide covers everything you need to know about setting FreeSCAN for remote access with the app. It assumes you have already setup FreeSCAN to connect with your scanner. It is broken down into 4 steps:

1. Setup FreeSCAN Server
2. Unblock in Windows Firewall
3. Setup port forwarding in your router
4. Enter IP information in FreeSCAN for iOS

Step #2 is not needed if you are not using Windows Firewall or have it switched off. Step #3 can be skipped as well if you are not interested in accessing your scanner over the internet.

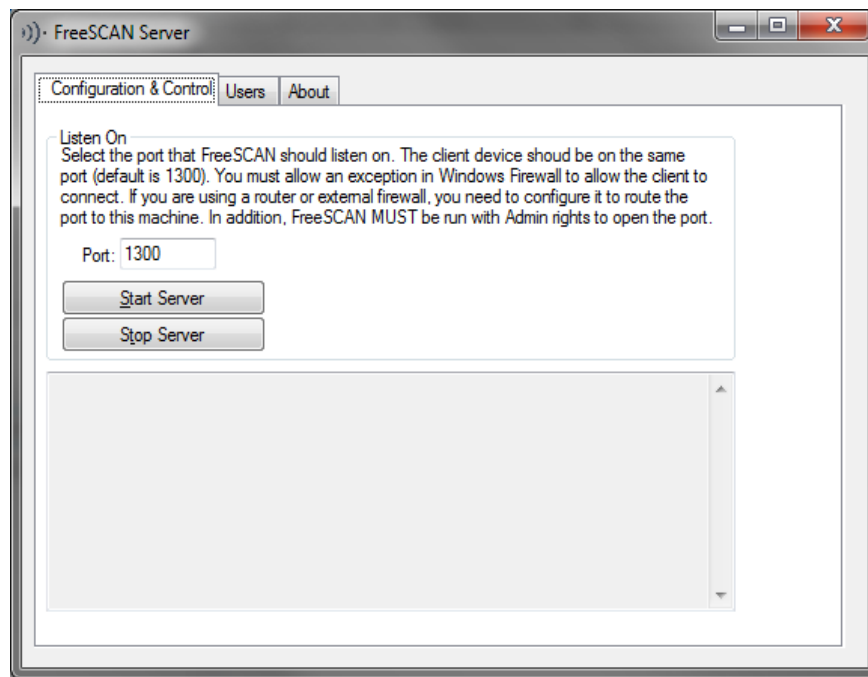
Setting Up FreeSCAN Server

Open up Virtual Control, click on the Remote Control menu and select Setup



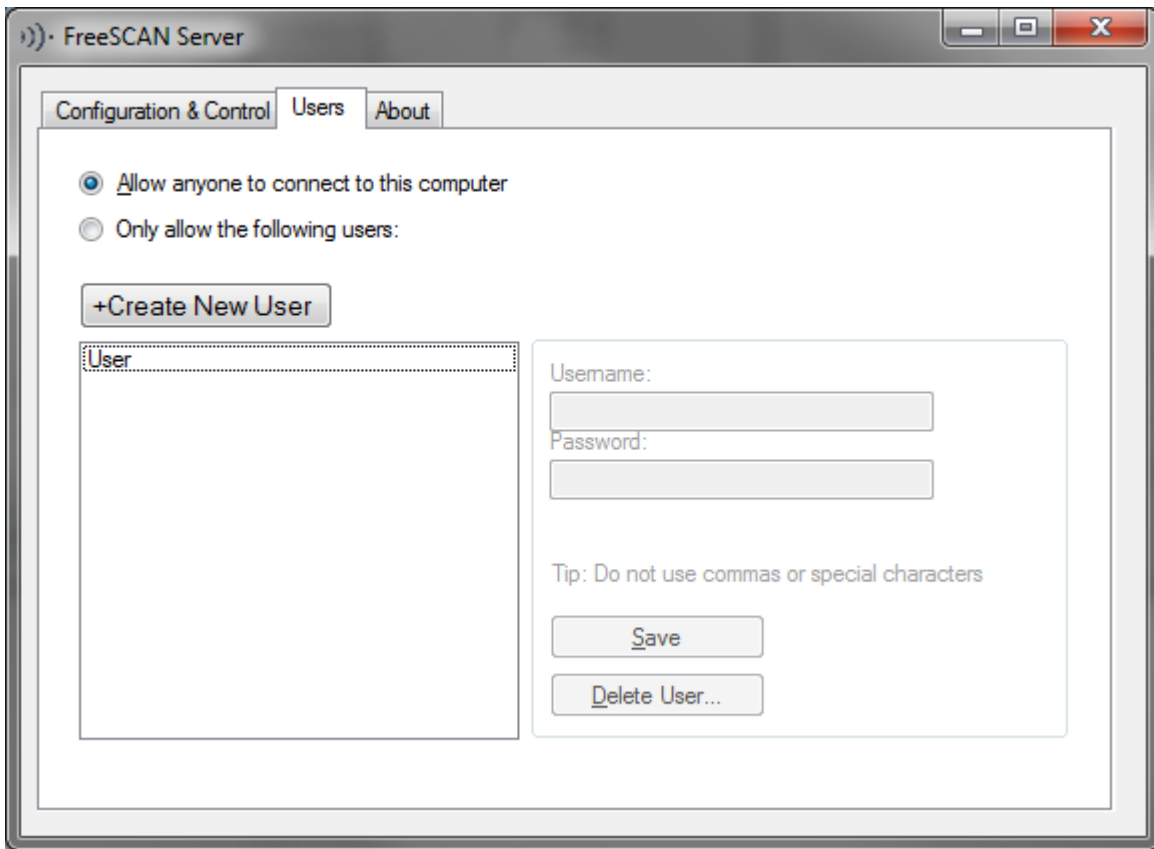
The Setup Screen – Configuration Tab

You can select which port you want FreeSCAN to listen to connection, default is 1300. Later on when setting up the app, this port number will need to be used.



Setup Screen – Users

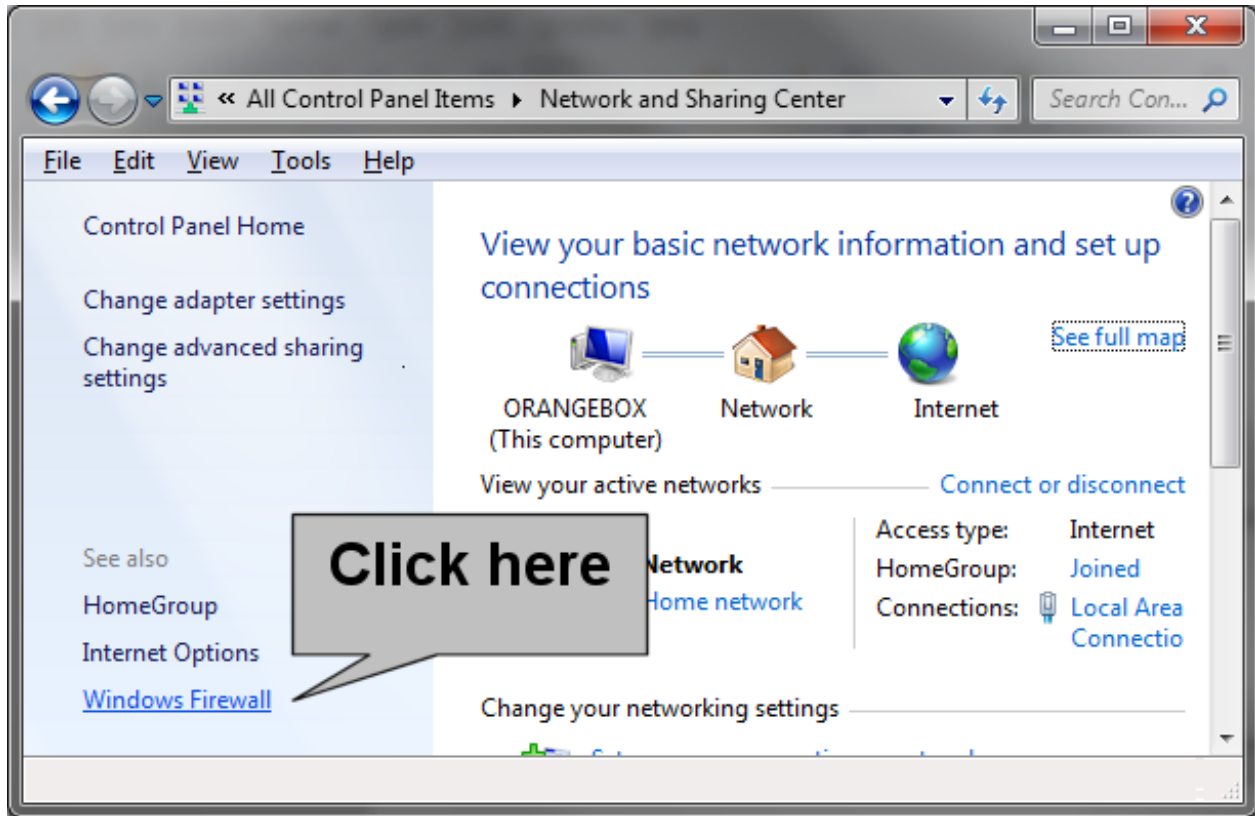
FreeSCAN can be setup to allow anyone to access your scanner, or be limited to username/password combinations.



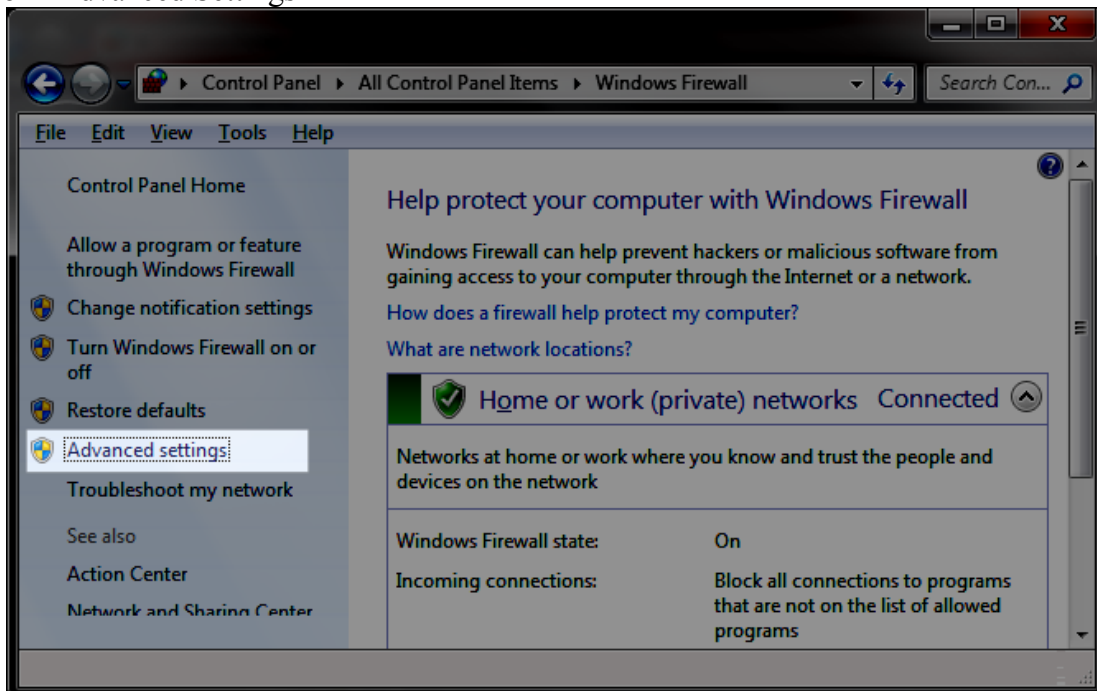
Configuration is now complete. Click on the “Start Server” button in the Configuration & Control tab to start the server. FreeSCAN must be run with Administrator rights in order to accept incoming connections.

Settings Up Windows Firewall

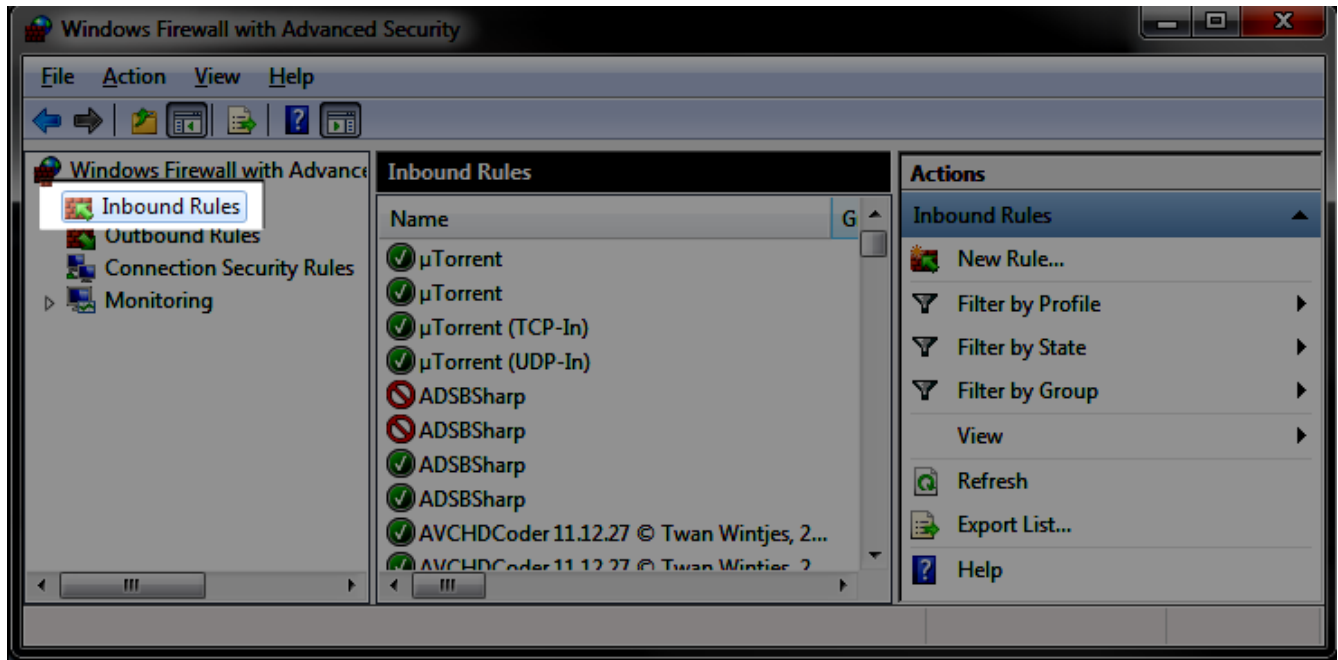
1. Open the Firewall configuration screen in Control Panel



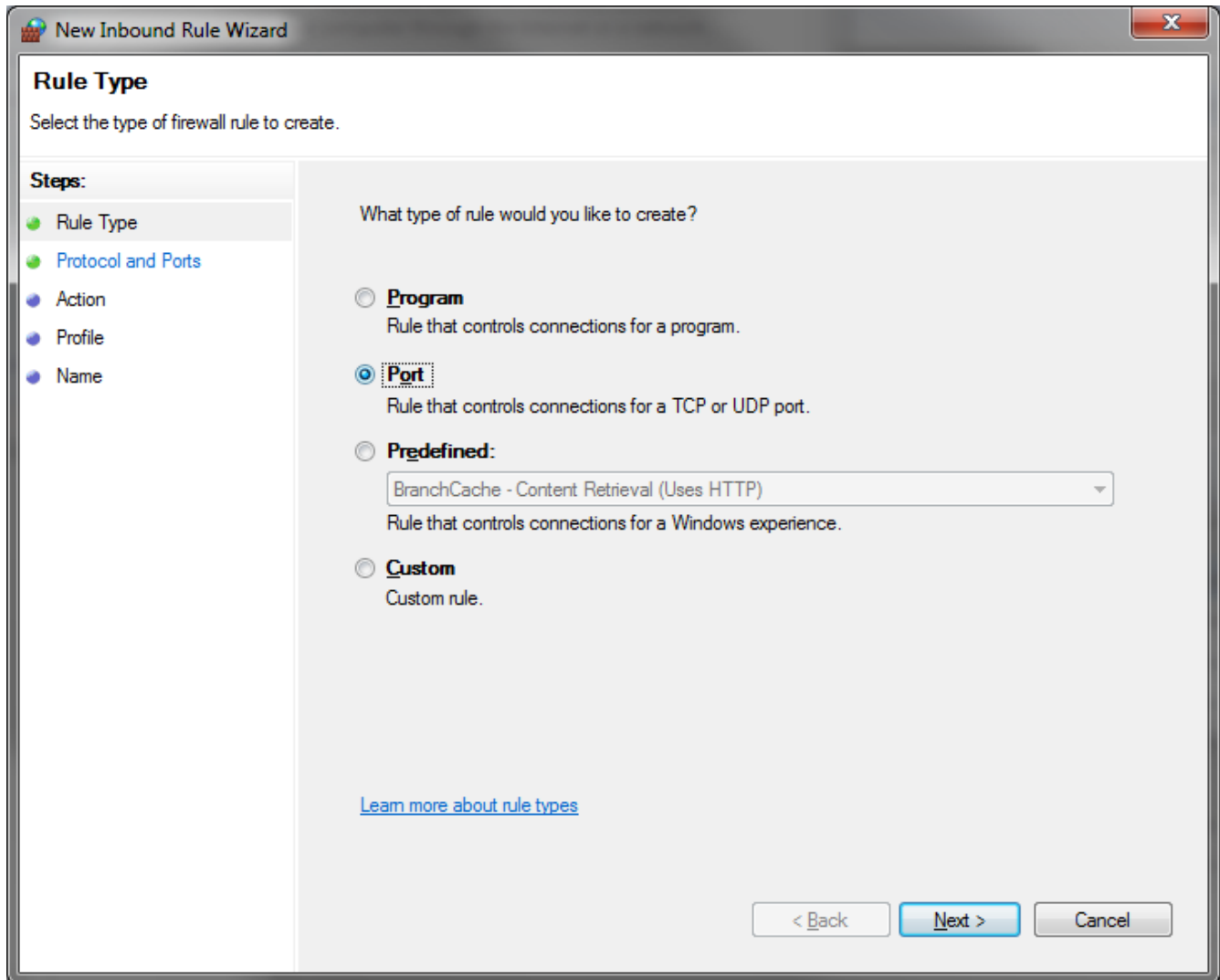
2. Click on “Advanced Settings”



3. Click on “Inbound Rules”, and then “New Rule...”



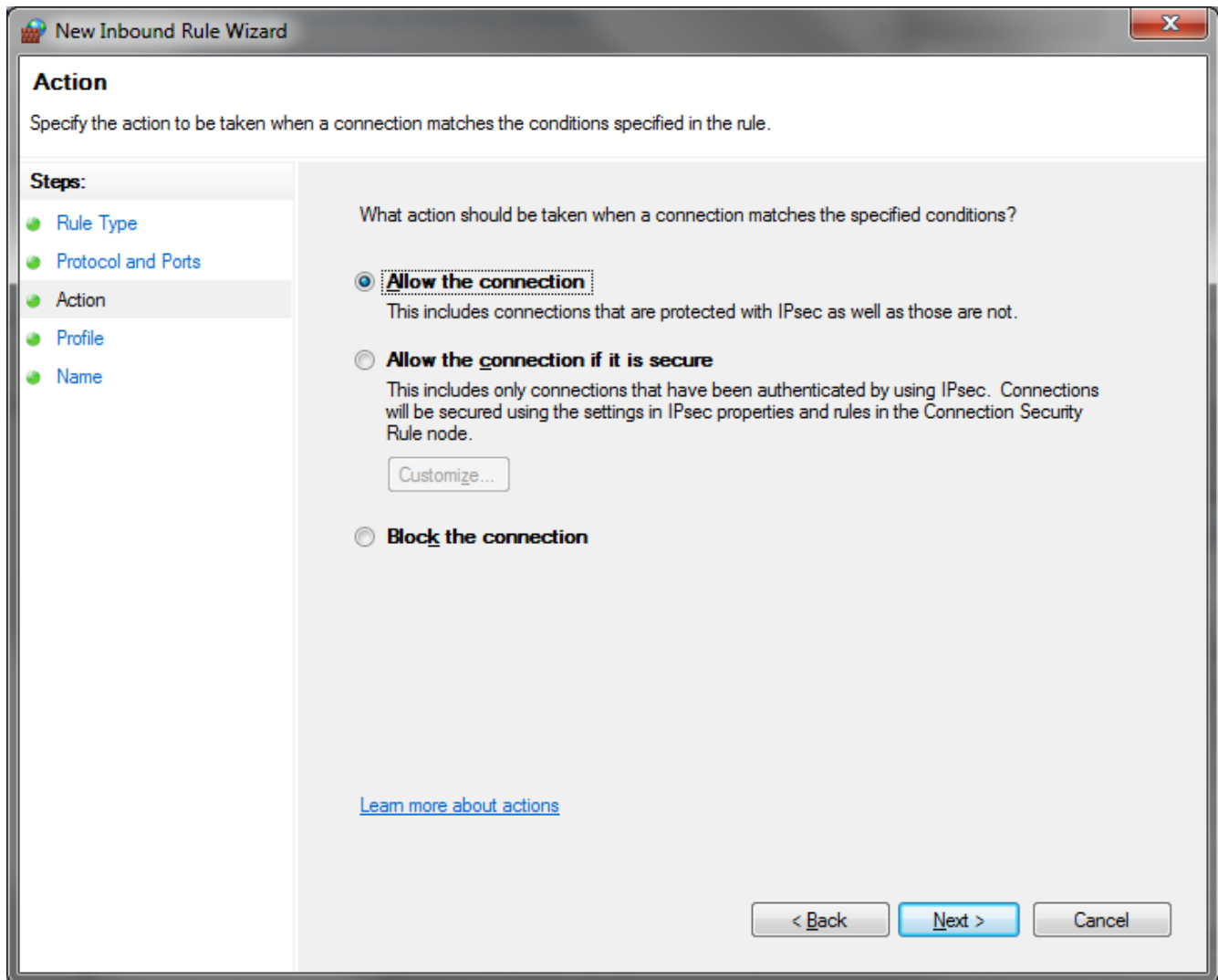
4. The wizard pop ups. Click on the “Port” radio button. Select next.



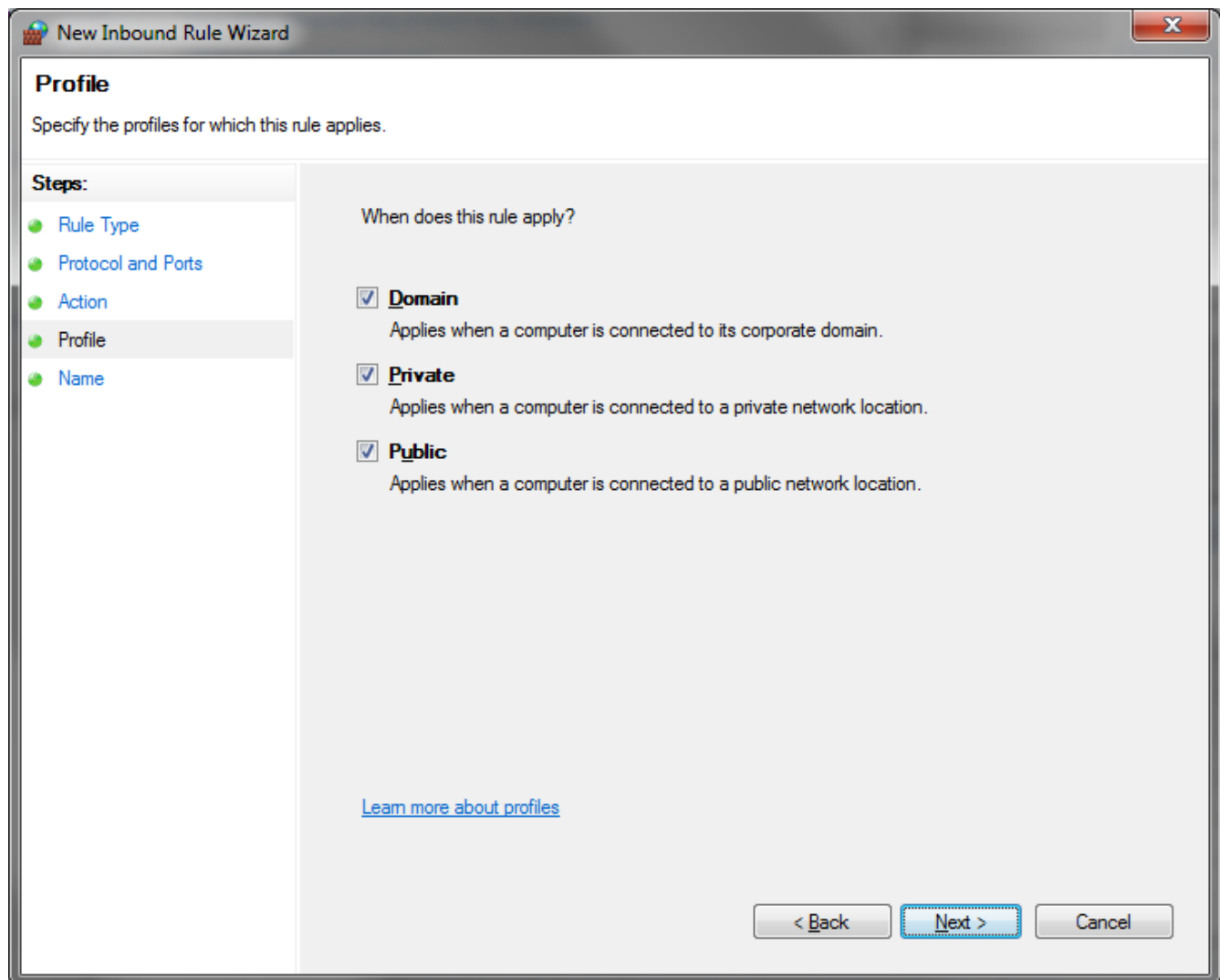
5. In the next screen, type in the port number you have selected under “Specific Local Ports”. In this case, the default number of 1300 is entered in. Afterwards, click on 'Next'

The screenshot shows the 'New Inbound Rule Wizard' dialog box, specifically the 'Protocol and Ports' step. The window title is 'New Inbound Rule Wizard' and it has a close button in the top right corner. The main heading is 'Protocol and Ports' with the instruction 'Specify the protocols and ports to which this rule applies.' On the left, a 'Steps:' sidebar lists: Rule Type (selected), Protocol and Ports (current step), Action, Profile, and Name. The main area contains two questions: 'Does this rule apply to TCP or UDP?' with radio buttons for 'TCP' (selected) and 'UDP'; and 'Does this rule apply to all local ports or specific local ports?' with radio buttons for 'All local ports' and 'Specific local ports:' (selected). The 'Specific local ports:' option is followed by a text input field containing '1300' and an example text 'Example: 80, 443, 5000-5010'. At the bottom, there are three buttons: '< Back', 'Next >' (highlighted in blue), and 'Cancel'. A link 'Learn more about protocol and ports' is also present.

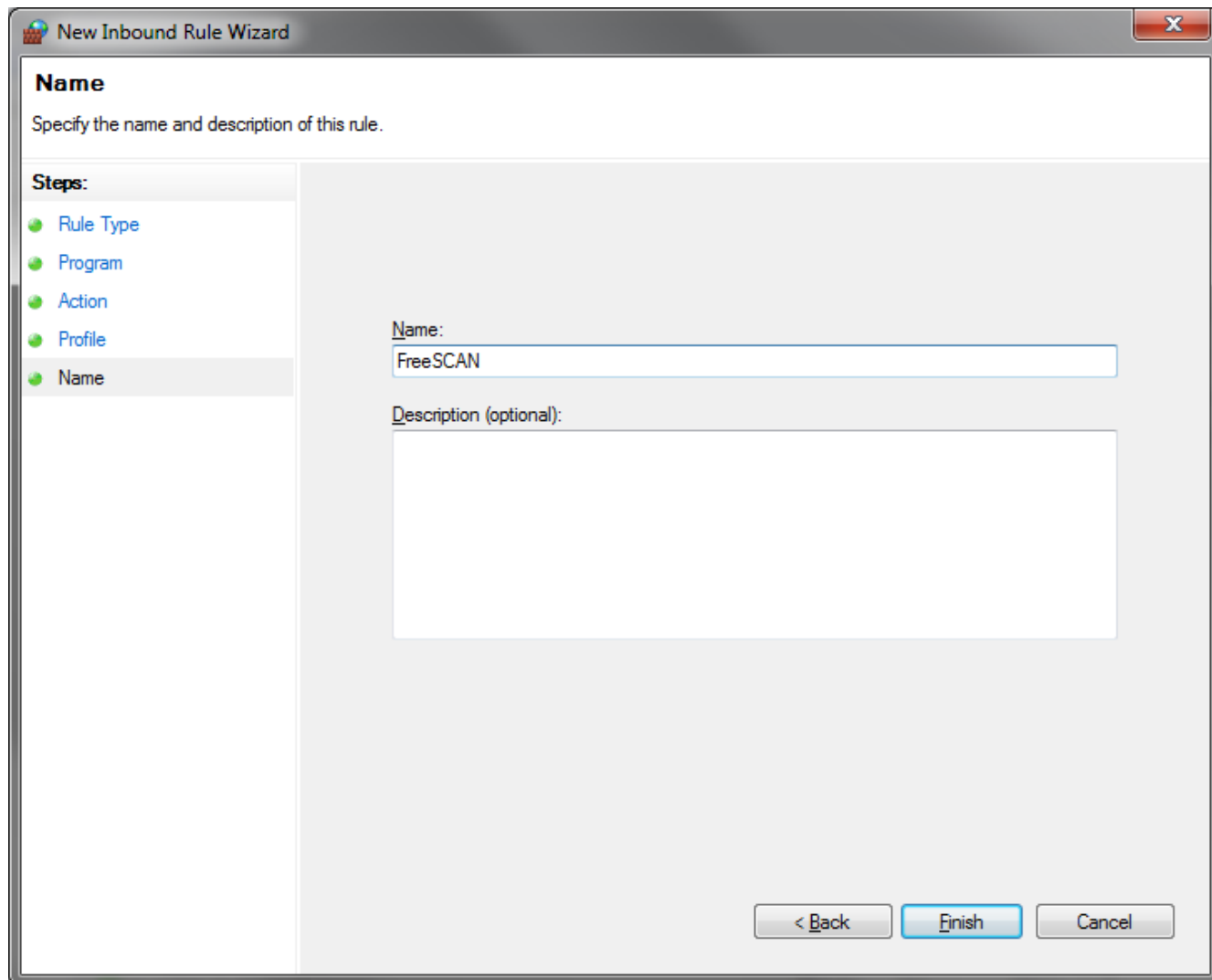
6. Click next through this screen



7. Click next again



8. Give your new rule a name and click Finish. This completes the setup process for Windows.



Settings Up Port Forwarding In Your Router

To control your scanner over the internet, you need to tell your router to forward the port to the appropriate PC. If you are only interested in controlling your scanner while on the local network, you can skip this setup.

Different routers have different configuration steps, but here are some guides for common brands:

Linksys and Netgear

<http://www.wikihow.com/Set-Up-Port-Forwarding-on-a-Router>

Linksys/D-Link/Netgear with a good overview

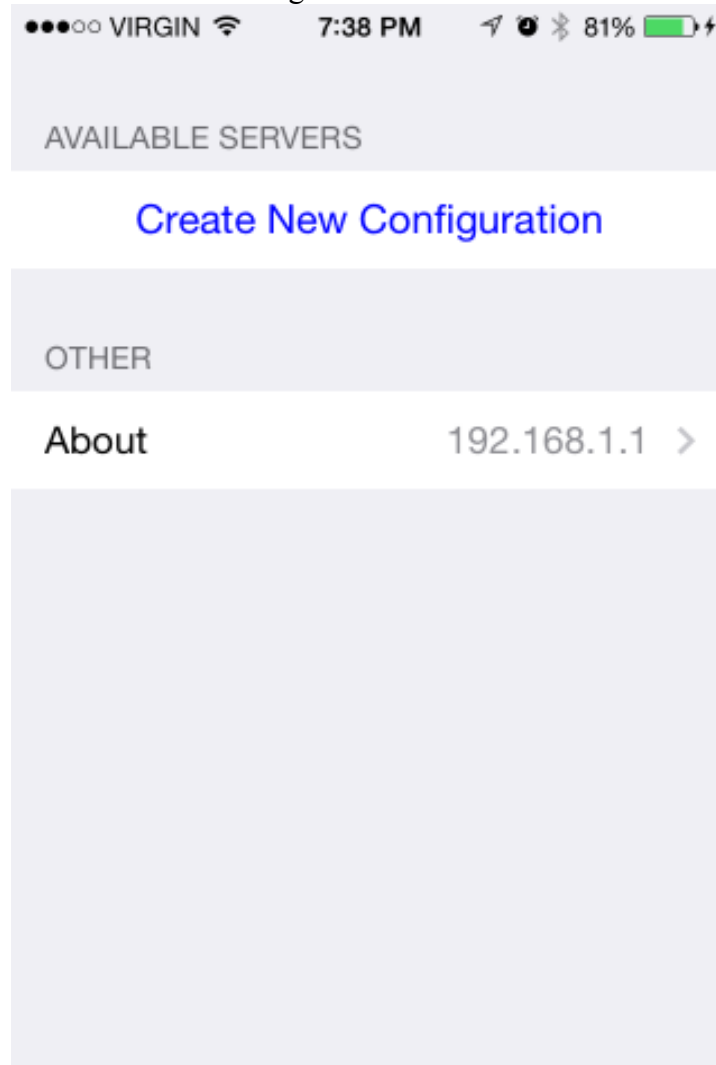
<http://www.howtogeek.com/66214/how-to-forward-ports-on-your-router/>

Asus Routers

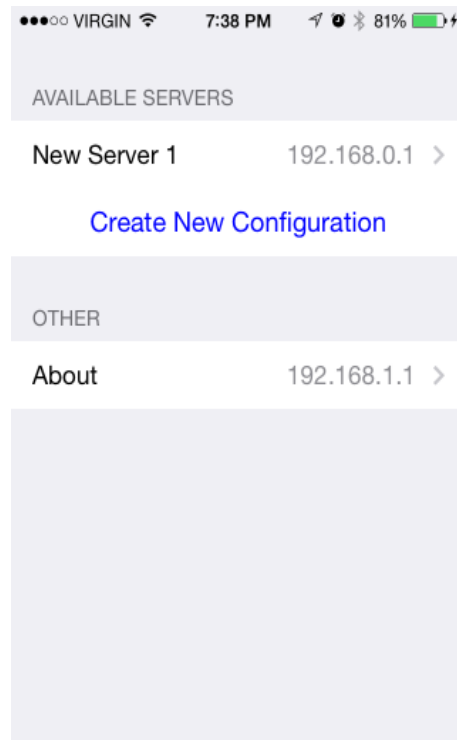
http://portforward.com/english/routers/port_forwarding/Asus/

Settings Up And Using The iOS App

1. Start the app and select “Create New Configuration”



2. A new default configuration pops up. Touch to select it.



3. Enter in the IP address of the host PC. When you started the server earlier, the IP address was displayed. If you are planning to connect over the internet, you need to enter your external IP address. You can find this out by going to a website such as <http://www.whatsmyip.org/>

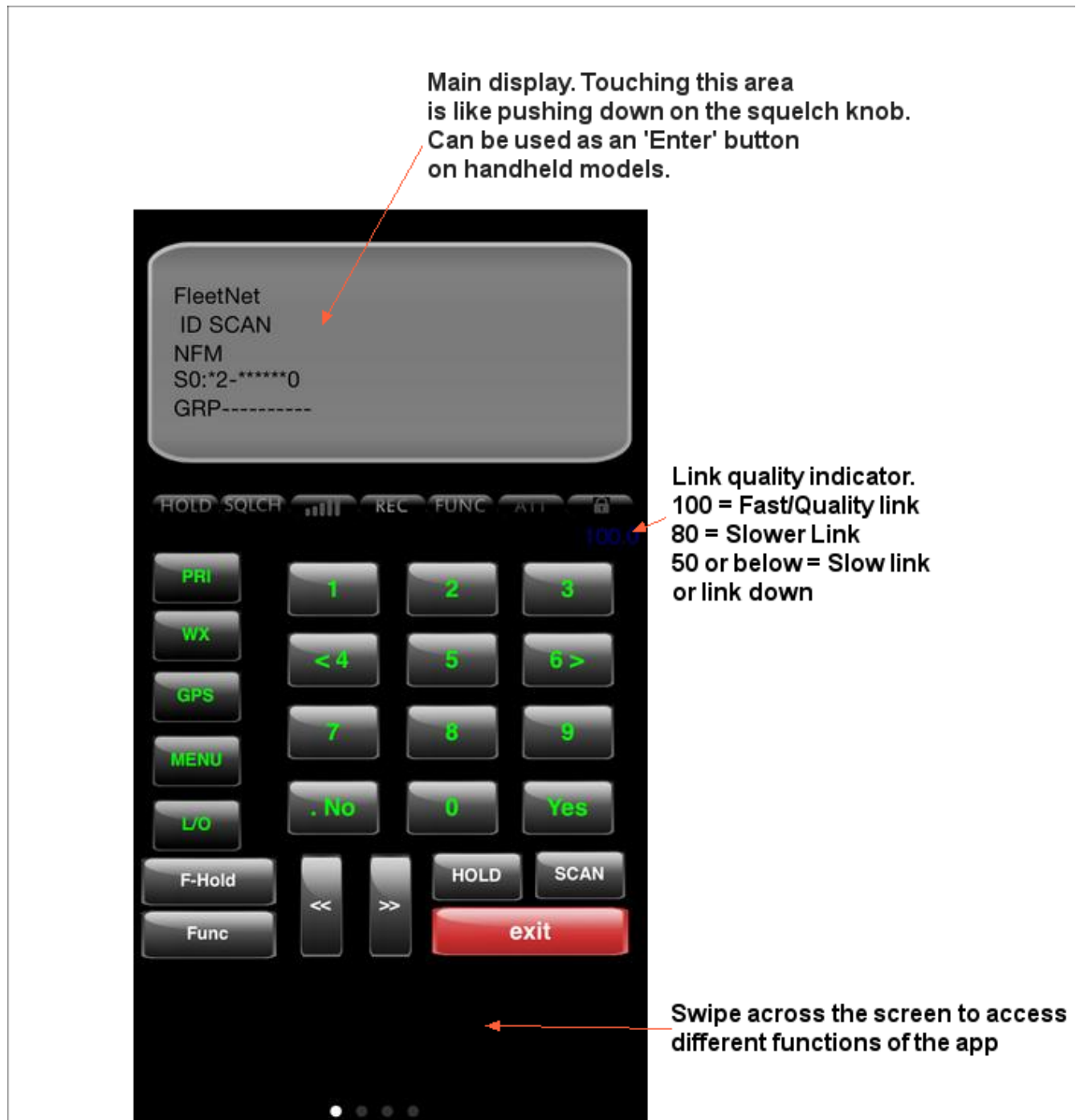
- The Port Number can stay the default 1300 if you have not changed it anywhere else.
- Enter in a username and password if you have set FreeSCAN to only accept verified connections. Otherwise, these can be left default.
- If you have a sound streaming program such as ScannerCast setup, enable audio streaming.
- Touch 'Connect Now'

The screenshot shows a mobile application interface for configuring a server. The status bar at the top indicates the carrier is VIRGIN, the time is 6:27 PM, and the battery is at 76%. The app title is "New Server 2". The configuration fields are as follows:

Name	New Server 2
Server Address	192.168.1.10
Port Number	1300
User name	user
Password	••••••••
Audio Enabled	No
Audio Port	8000

At the bottom of the screen, there is a button labeled "Connect now!".

4. Using the app



This concludes the setup guide. You will now have full remote control capabilities.